



MORGAN ASSOCIATES

ESTATE & LETTINGS AGENCY



31, St James Walk,
Cheltenham GL50 3UB
£1,150 PCM



2



2



1

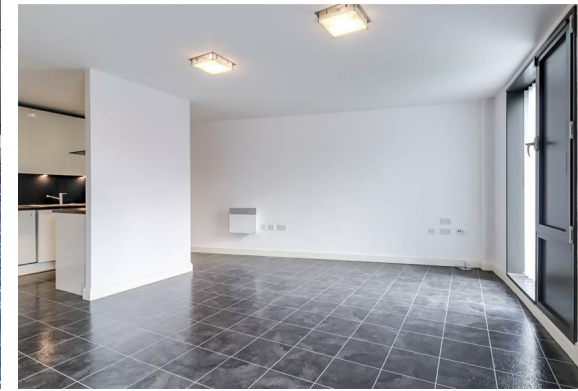


C

31, St James Walk,

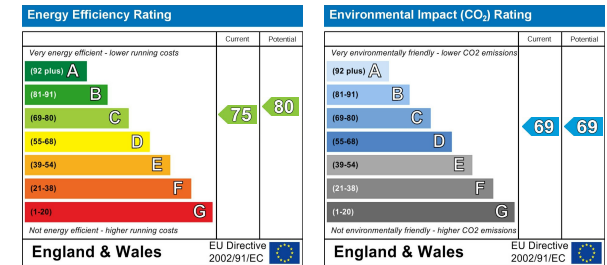
Cheltenham GL50 3UB

An immaculately presented two double bedroom unfurnished ground floor apartment, situated in St James Walk development near Waitrose, just walking distance to the town centre. Externally the property benefits from allocated off road parking. Internally the property includes a large open plan living room with a modern kitchen including white goods, two double bedrooms with an en suite to the master bedroom, and a further contemporary bathroom with shower over the bath. The apartment is warmed throughout by modern electric heaters.



Floor Plan

Energy Efficiency Graph



Area Map



Viewing

Please contact us on 01242 514 285 if you wish to arrange a viewing appointment for this property or require further information.

Rotunda Buildings Montpelier Exchange
Cheltenham
Gloucestershire
GL50 1SJ

T. 01242 514 285

E. info@morgan-associates.co.uk

W. www.morgan-associates.co.uk

These particulars, whilst believed to be accurate are set out as a general outline only for guidance and do not constitute any part of an offer or contract. Intending purchasers should not rely on them as statements of representation of fact, but must satisfy themselves by inspection or otherwise as to their accuracy. No person in this firm's employment has the authority to make or give any representation or warranty in respect of the property.

